



News December 2006

21.12.2006 21.12.2006.17

<< [back](#)

Tips & Tricks TecLocal 3.0 – Automatic Login and Skipping the Animated TecLocal Introduction

In this edition of Tips&Tricks you can learn how to open TecLocal faster by skipping the animated TecLocal introduction. You can also learn how to set up an automatic login on your TecLocal client.

Skip the animated TecLocal introduction

Skipping the animation of the TecCom logo at the start speeds up the opening of the TecLocal client so that you go right to the login screen.

Steps:

1. Add the following entry to the [DEBUG] section of the TEC-Client.ini file (for example with a text editor):
SkipIntro=1
2. You can choose between 1 = without intro OR 0 = with intro.
3. Save the file.

```
TEC-Client.ini - Notepad
File Edit Format View Help
; successful connection with Teccom-network: 0 = no - 1 = yes
SuccessfulConnection=1

----- Interfaces -----

[Interfaces]
; absolute path to order transfer file
orderTransferFile=
I:\C:\Teccom\client\ordertransfer\de\ordertransferbeta.dat

----- debug -----

[DEBUG]
; should Messages to Teccom server be logged?
; 0 = no, 1 = yes
MessageLogging= 1

; level of messages to log, integer from
; 1 = no log to 5
MessageLogLevel=5

; absolute path of logging directory
LogDirectory=C:\Teccom\client\Log

; should program work with test responder or online
ResponderEnabled=1

; should Import file be deleted after reading
; 0 = delete 1 = preserve
PreserveImportFile=1

SkipIntro=1

PresentationClient=1

[online catalogue]
Url=http://www.teccom.de
EnableContextMenus=1

Ln 145, Col 26
```

Tips:

- The TEC-Client.ini file is in the main directory of the client installation. It is an essential part of the TecLocal software. A wrong entry or change can cause your TecLocal to not work properly any more.
- You may need administrator rights on your PC to make changes.

Automatic Login

Start TecLocal with an automatic login to avoid the manual login. This is faster and there are no problems with forgotten passwords.

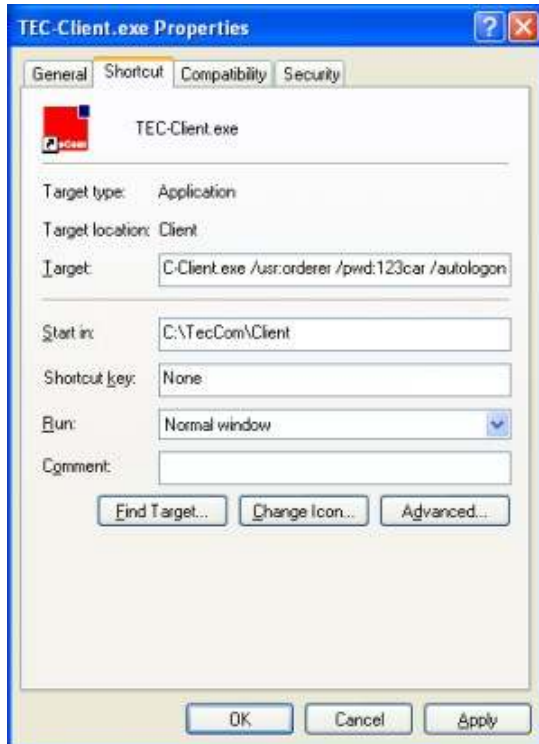
Steps:

1. Right-click on the TecLocal symbol on the desktop or on the link under Start-Programs-TecCom. If you do not have a link, this is how to add one. Click with the right mouse button on TEC-Client.exe in the TecCom directory and select "Add link." Then copy this to your desktop or another location from which you start

- Home
- Company
- Products&Services
- News&Press
 - News
 - Newsletter
 - Events
 - Archiv
 - Press
- TecCom Users
- CAP-Standard

TecLocal.

2. Under "Properties" – "Destination" add the following entry. Be careful to write it correctly, including the space:
/usr:name /pwd:password /autologon
Example: C:\TecCom\TEC-Client.exe /usr:Orderer /pwd:123car /autologon
3. Replace "name" (UserID) and "password" with your own username and password.
4. Accept the changes and click on "OK."
5. To set up additional automatic logins, for example for different employees, copy the TecLocal symbol and repeat steps two through four.



Tips:

- For this type of login, the login data are not encrypted; they are in plain text for anyone to see, Any person with access to the desktop can use TecLocal or see the login data. For security reasons you should think carefully before you decide to implement automatic login.
- For automatic login you cannot use a space in the username. "TecCom Marketing" is not allowed, but "TecCom-Marketing" or "TecCom_Marketing" is permitted.

If you have any questions please contact our Help Desk at support@teccom.eu or +49 (0)1805 – 65 65 56.