



■ News October/November 2006

10.11.2006 10.11.2006.19

[<< back](#)

Tips & Tricks TecLocal 3.0 – Update Help Files and Add New Language Versions

The TecLocal software provides context-sensitive help in many areas. Do you want to update these help files or add a new language without reinstalling the software completely? Would you like TecLocal in Czech, Danish, Finnish, Hungarian, Norwegian, Polish, Russian, or Swedish? This edition of Tips & Tricks shows you how to do this step-by-step, all without a new installation.

Before you start to update please note the following:

- The status of your help files is from TecLocal Version 3.0 (Service Pack 2.4.012) from 17.07.2006. If you do not have that status you can download the description of the updates here.
- The updated help files work for all previous TecLocal 3.0 installations.
- You may need administrator rights to make the changes.
- Close the TecLocal application before you change or add to your help files.
- DO NOT ever change the name of any help file! If you do it will not work. The files are already correctly named so that they just need to be copied to the right directories.

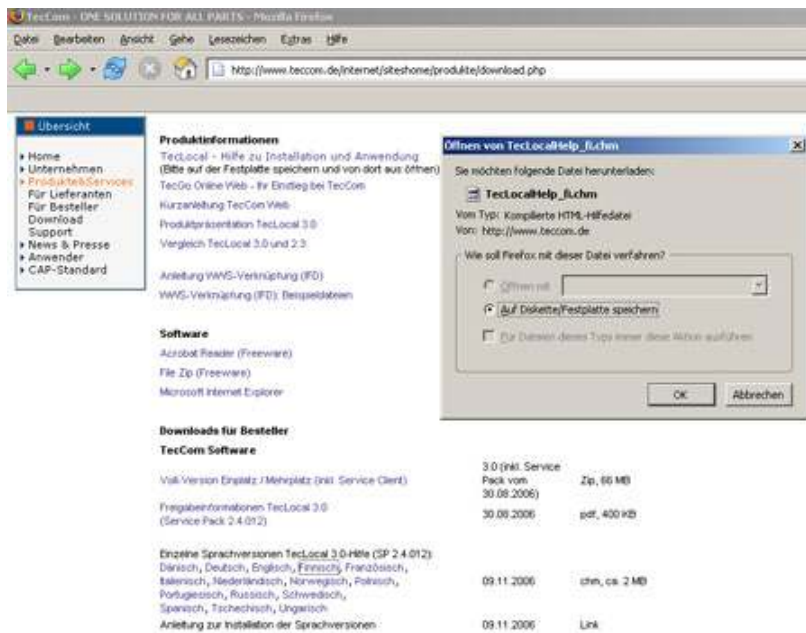
Update

- Load the new language version or the file to be updated from the TecCom homepage to PC where your TecLocal installation is located:

- NEW: Czech**
- NEW: Danish**
- Dutch**
- English**
- NEW: Finnish**
- German**
- French**
- NEW: Hungarian**
- Italian**
- NEW: Norwegian**
- NEW: Polish**
- Portuguese**
- NEW: Russian**
- Spanish**
- NEW: Swedish**

The file format is CHM – a compiled HTML help file.

-
- ▶ Home
- ▶ Company
- ▶ Products&Services
- ▶ News&Press
- News**
- Newsletter
- Events
- Archiv
- Press
- ▶ TecCom Users
- ▶ CAP-Standard



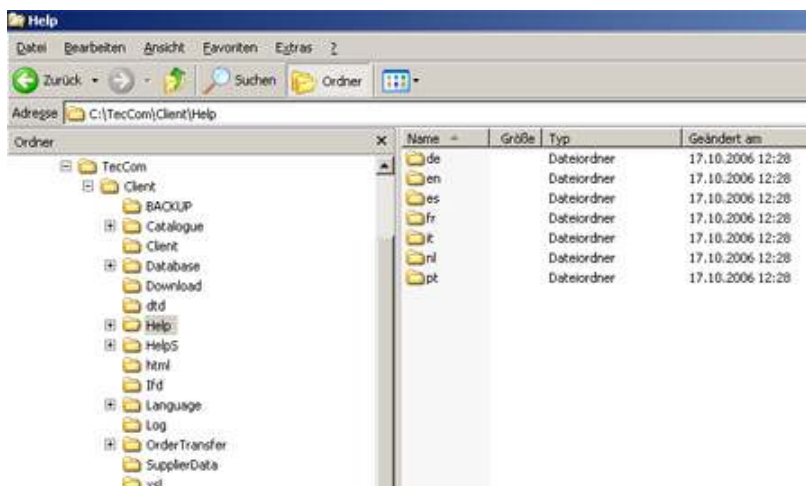
- **Update of an existing help file:**

a. In the directory of your TecLoc installation (as a standard it is the following path: C:\TecCom\Client\Help), open the directory of the language version to be updated.

- i. **de = German**
- ii. **en = English**
- iii. **es = Spanish**
- iv. **fr = French**
- v. **it = Italian**
- vi. **nl = Dutch**
- vii. **pt = Portuguese**

b. Replace the existing version with the version that you have downloaded.

c. The help function is now up-to-date and immediately available to you in TecLocal.



- **Add a new language version:**

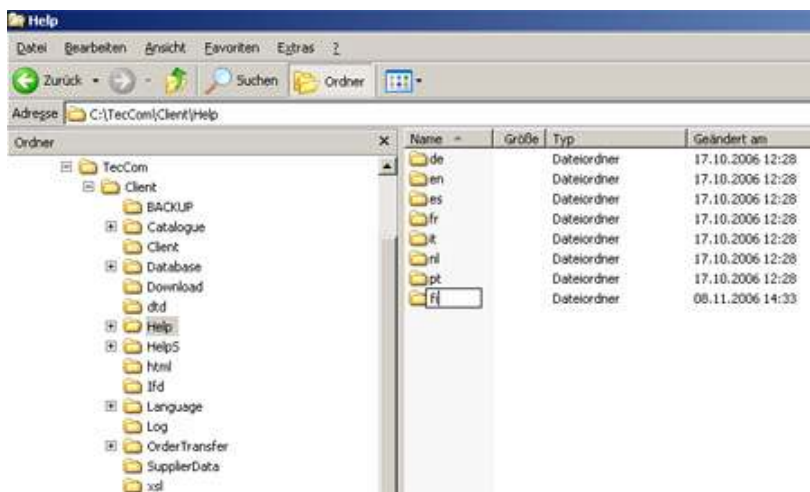
a. Open the directory containing your TecLocal installation. As a standard it has the following path: C:\TecCom\Client\Help

b. Create a new directory for the language version you want to add

- i. **cz = Czech**
- ii. **dk = Danish**
- iii. **fi = Finnish**
- iv. **hu = Hungarian**
- v. **no = Norwegian**
- vi. **pl = Polish**
- vii. **ru = Russian**
- viii. **se = Swedish**

c. Copy the file you saved into this directory.

d. The help function is now up-to-date and the new language version immediately available to you in TecLocal.



If you have any questions please contact our Help Desk at support@teccom-eu.net or +49 (0)1805 – 65 65 56.