



■ News March 2005

24.05.200624.05.2006.17

<< back

Tips & Tricks – It's Easy to Connect Part Catalogs!

1. Problem – Transferring parts from a catalog to TecLocal!

As a part catalog user you know the problem. You have selected the part you want in a catalog and have to copy it by hand into TecLocal, which is a lot of trouble. By connecting the catalog to TecLocal you can eliminate this work, because products can be imported easily. It is also possible to use more than one catalog comfortably with the TecLocal software.

2. Advantages – What does connection to TecLocal bring?

Connecting one or more catalogs to TecLocal means less time and lower costs, because manual data entry is no longer necessary. Errors are eliminated because products and product numbers are automatically entered in the correct format. You can work more efficiently, offering your customers better and faster service.

3. Connecting & Using a Catalog

With an example of connection and use of a **"sample catalog"**, the procedure can be demonstrated. Other catalogs can be connected the same way.

Special case – use of TecDoc: If you installed TecDoc before you installed TecLocal, TecLocal will load the correct settings (**"Call, transfer file and IFD file"**) automatically. Then you just have to enter **"TecDoc"** as described under **"2. New"** and confirm with **"OK"**. After a new start the correct settings will be entered.

1. Open TecLocal and go to **"Administration"** – **"Interfaces"** and then to **"Catalogs"**.

2. Using the function **"New"** you can set up a new catalog. By clicking you open a window where you must enter a name.

3. In the window that opens then, there are three empty fields to fill out. **"Call"** indicates the catalog application itself. The entry for **"Transfer File"** describes storage location for the catalog shopping basket. **"IFD Files"** indicates the files that make possible the translation of the shopping basket into TecLocal.

a. "Call":

You need a link to the sample catalog. The easiest way to find the name and storage location of these files is to go where you normally start the catalog. Instead of starting it with a link or doubleclick, click on it with the right mouse key. Under **"Properties"** a window opens in which **"Destination"** stands. This is the correct name and storage location of the application. Copy this entry into the TecLocal line **"Call"**.

b. "Transfer File":

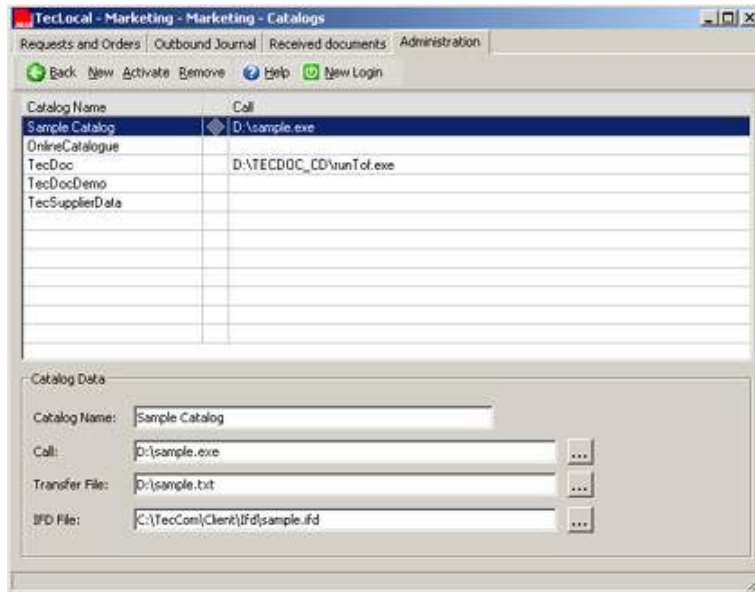
Here a link to the shopping basket of the sample catalog is required. The shopping basket is normally located in a directory in your sample directory and is in TXT format. For many catalogs the **"Settings"** provide the possibility to view and edit the name and storage location of the file. You have to put something into the shopping basket once so that this data type will be set up. After you know the name and storage location of the file, go back to TecLocal and click on the switch with the three points after the line for **"Transfer File"**. Go to the file you find, mark it and confirm with **"Open"**.

c. "IFD File:"

For TecDoc and many other catalogs there are prepared IFD files that you just need to copy into the correct TecLocal directory. Under **"www.teccom.de / Products & Services / Download"** you can find the currently available versions. Store this file in the directory

- ▶ Home
- ▶ Company
- ▶ Products&Services
- ▶ News&Press
- News
- Newsletter
- Events
- Archiv
- Press
- ▶ TecCom Users
- ▶ CAP-Standard

where the TecLocal installation is located under "**TecCom – Client – IFD**". In the line "**IFD File**" enter the corresponding path.

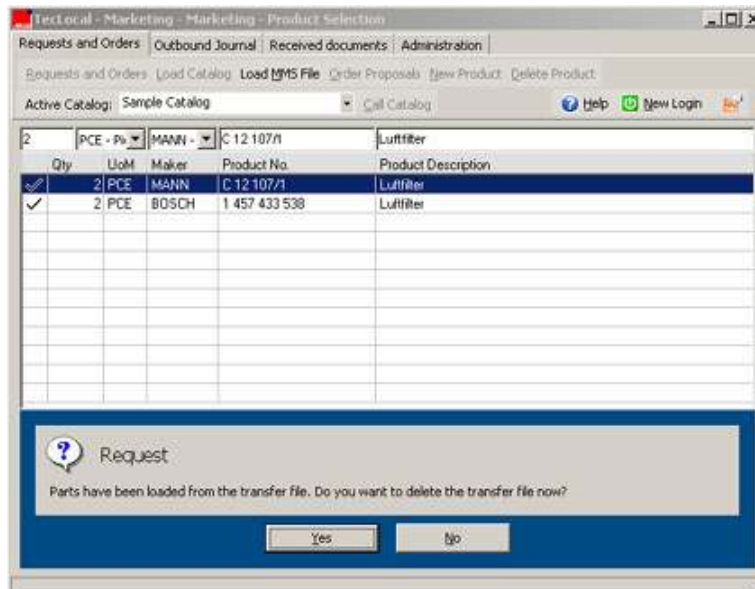


4. Setting up a previously selected catalog:

Mark the catalog with a doubleclick. A gray diamond appears after the name and shows that it has been previously selected. This means that it has been selected as the active catalog for the "**Inquiries and Orders**" window. By clicking on "**Call Catalog**" you can start the active catalog directly from TecLocal.

5. Using the Catalog Interface:

- Choose the product you want in the TecDoc catalog and put it in the shopping basket.
- In TecLocal switch to the window "**Inquiries and Orders**".
- Activate the button "**Load Catalog**" in order to read in the shopping basket of the standard catalog into TecLocal. After you have done this successfully the question will appear, asking whether you want to delete the transfer file. If you do the shopping basket will be emptied; otherwise the items will be kept and will be transferred again the next time you read in.



d. The products read in from the shopping basket are normally all indicated with a checkmark. If you are placing an inquiry with a particular supplier, remove the checkmark for the products he does not offer. Afterwards you can send the order or inquiry. Repeat this for all desired suppliers.

6. Please note: TecLocal in the single-user installation can only handle one shopping basket per connected catalog.

4. Available Interfaces

These IFD files are currently available under "[www.teccom.de / Products & Services / Download](http://www.teccom.de/Products%20&%20Services/Download)".

Name	Publication Date
Atris Catalog	11-2002
Bosal Catalog for TecLcoal 2.3	07-2004
Bosal Catalog for TecLcoal 3.0	09-2004
Carat Catalog	11-1998
CARWisk Catalog	12-2002
Centro Catalog	08-2003
Coparts Catalog	10-2005
Elekat Catalog	02-2002
ESI Catalog for TecLcoal 2.3 and 3.0	03-2005
InCat Plus (Sachs) Catalog	09-2002
TecCat Catalog	02-2003
TecDoc Catalog	06-2004
TiRep Catalog	01-2002
OrderTrans ARUA Catalog	02-2003

If you have any questions please contact our Help Desk at support@teccom-eu.net or via phone +49 1805 – 65 65 56 .